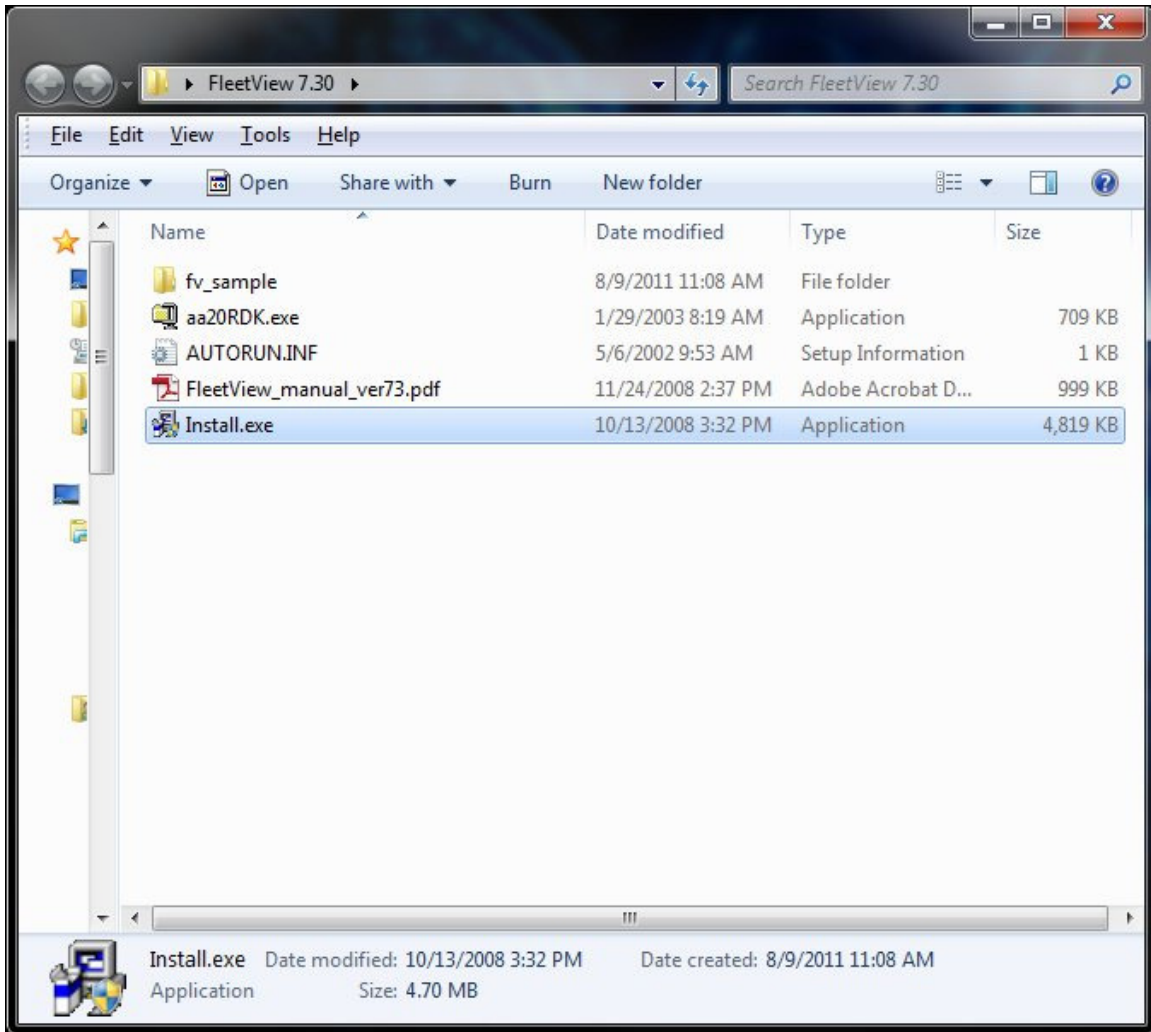
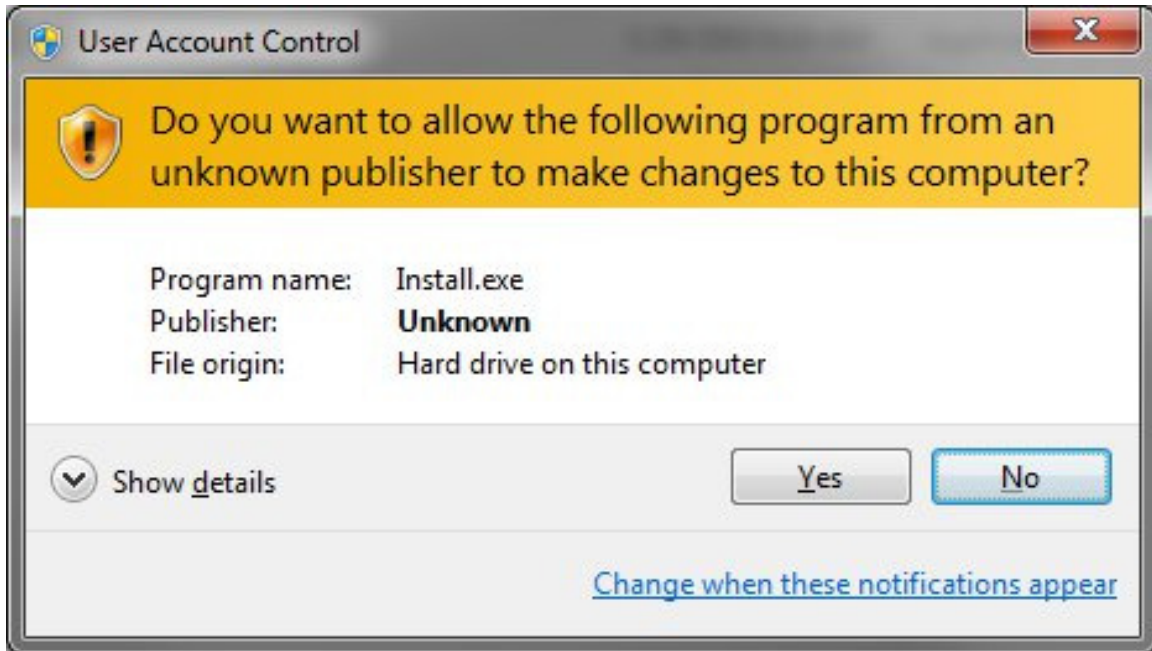


Getting started with Fleetview 7.30

1. Install Fleetview 7.30 by opening the folder created when you extracted the self-extracting archive file.
2. Double-click the file name install.exe.
 - Note - you will need administrative rights on your computer to install new software.



3. If running Windows 7 or Vista, you may see the follow warning, click Yes or Allow as required.



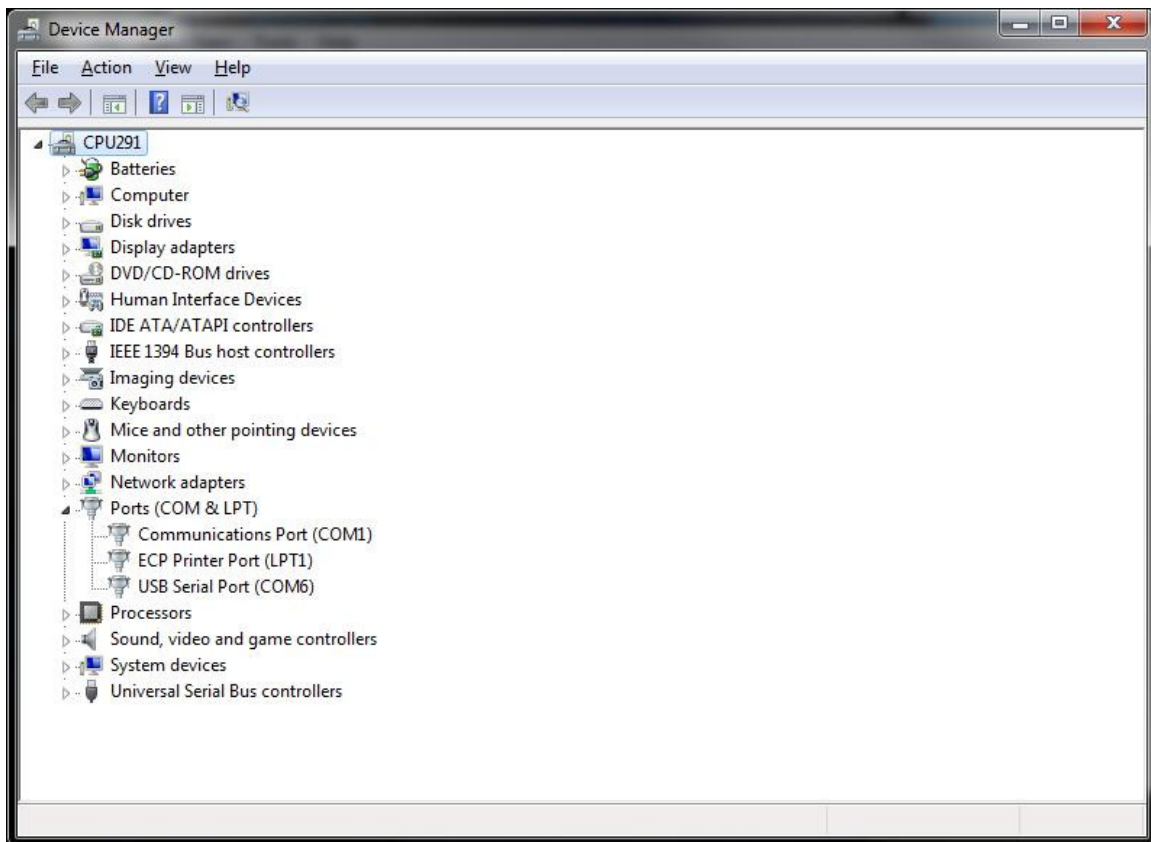
4. Follow the install instructions provided by the installer.
5. After Fleetview 7.30 has completed installation, connect your key reader to your computer's serial port.
 - a. If you have Key Reader P/N 953200, you will need two cables. One 9 pin to 25 pin and one 25 pin to 9 pin that connects to the serial port.
 - b. If you have Key reader P/N 953200-01, you will need either a 9 pin to 9 pin serial cable or a USB to serial adapter.
6. Connect the power supply to the Key Reader, turn the power switch to on and verify the red LED power indicator illuminates.

7. Open Device Manager

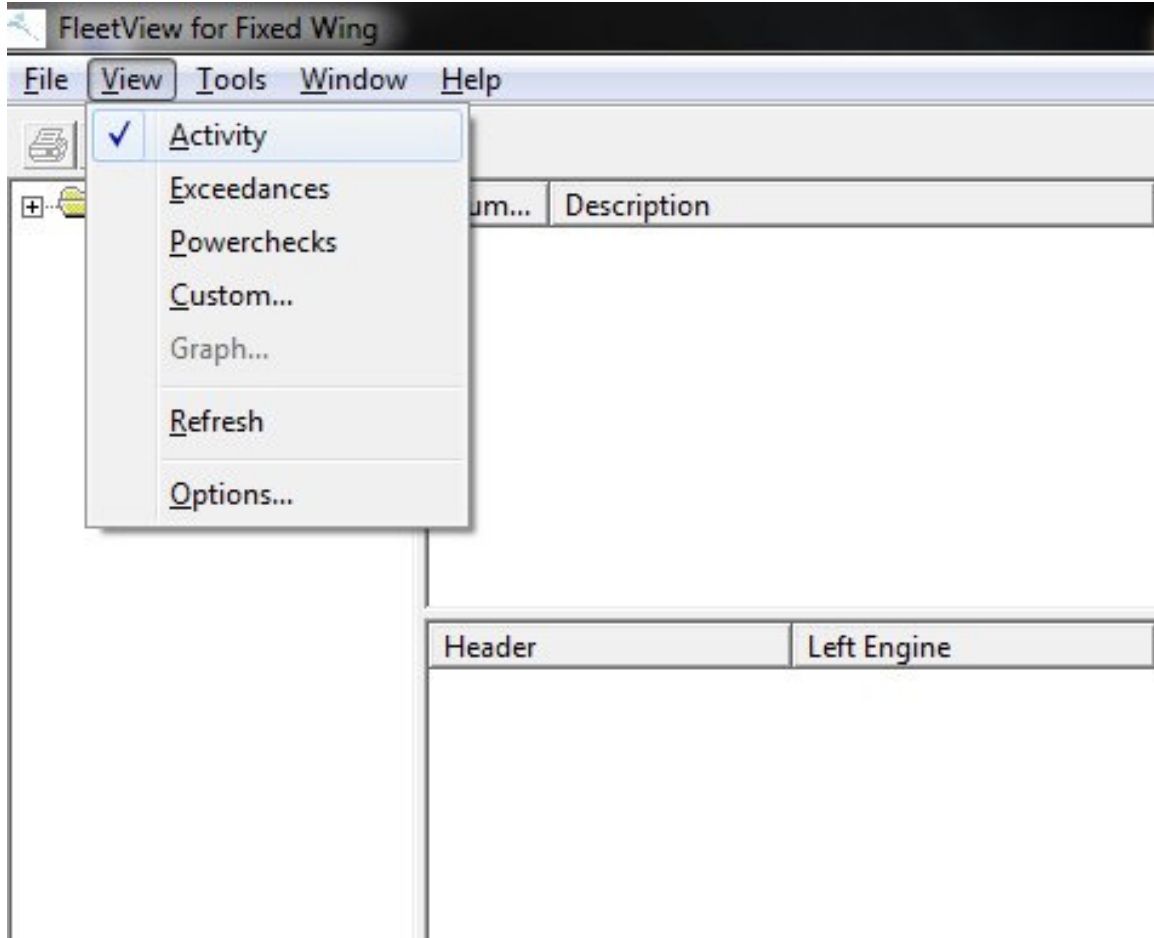
- a. If using Windows XP, click on Start, then choose Control Panel. You may have to select Classic View. Click on System, then click on the Hardware tab and then click Device Manager.
- b. If using Windows Vista, select Start button, then choose Control Panel, click System and Maintenance, and then click Device Manager.
- c. If using Windows 7, select Start button, then choose Control Panel, and then click on Device Manager.

8. Double-click Ports. Take note of the COM port number. If using a USB adapter it will show USB Serial Port. If using a built-in serial port it will show Communications Port.

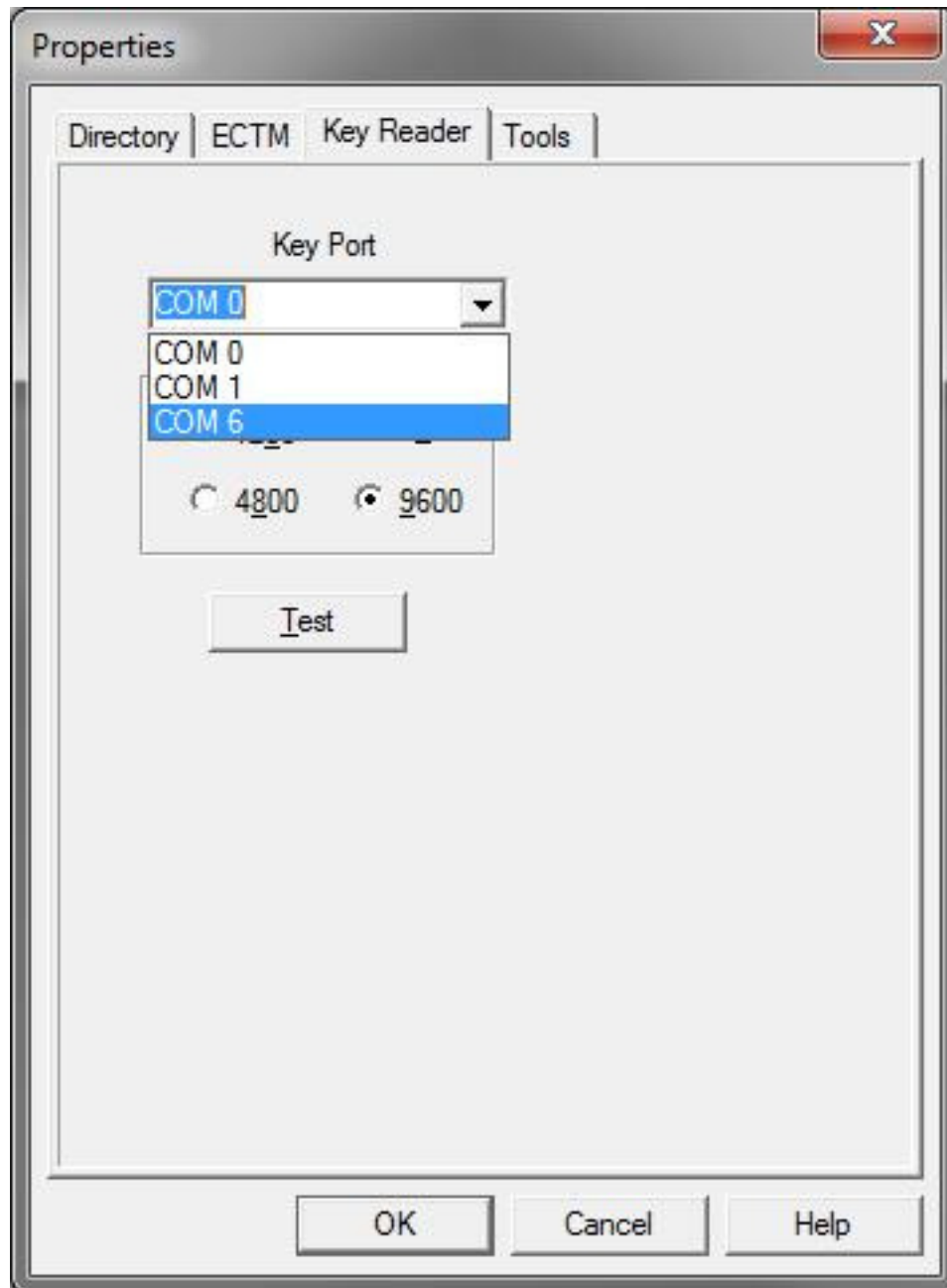
- If you are using a USB to Serial adapter and do not see your COM port, please refer to the adapter manufacturer for driver installation and/or troubleshooting information.



9. Open Fleetview 7.30, click on the view menu, and then click Options.



10. Select the Key Reader Tab, click on the Key Port dropdown menu. Select the Com Port from step 8.



11. Click Test. You should see the test successful message. You are now ready to read your key.



12. If you see the following error messages it means there is a problem with the computer's Serial port or the cabling.



For more information please refer to the Fleetview 7.30 operator's manual.